

DAMA

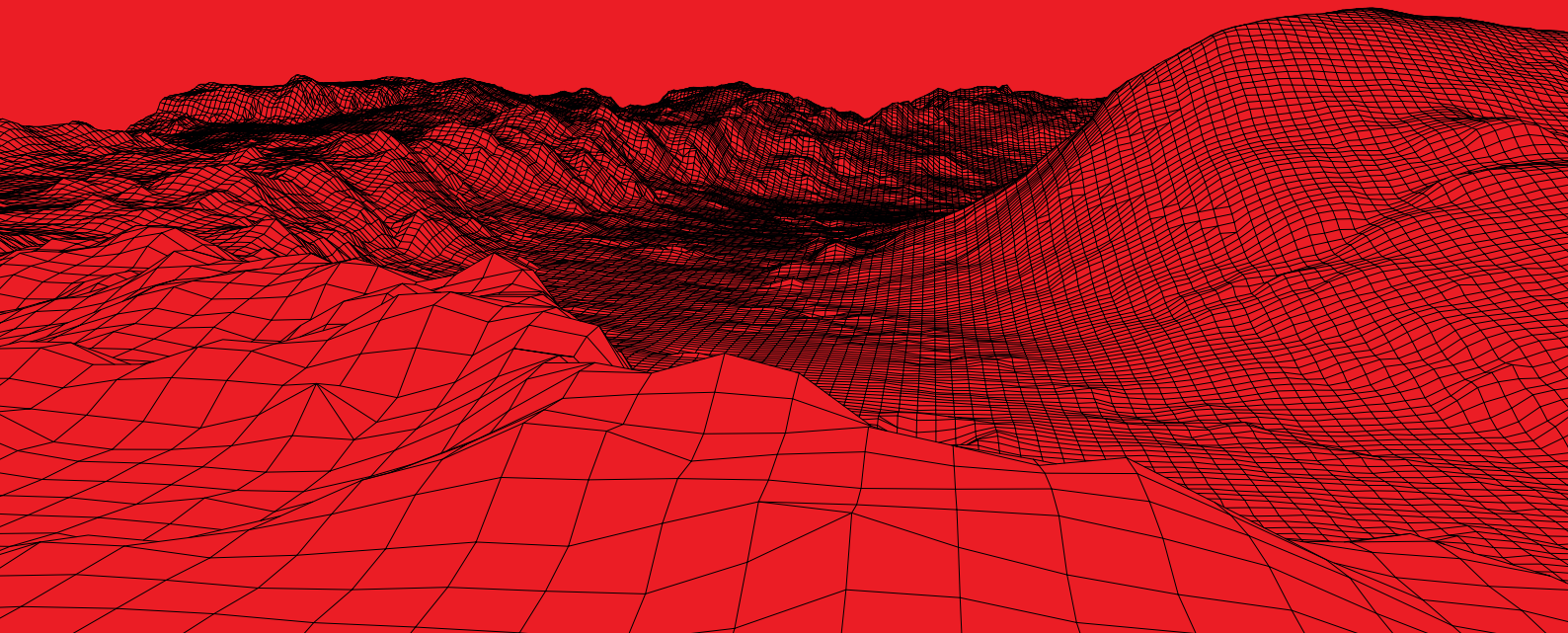


dama-engineering.com

Statement Of Qualification

DAMA Engineering

Resource - Reserve Estimations,
FS/BFS Studies, Mine Development,
Ore Processing & EPC/M Works





**The local and global experience
in mineral exploration,
development & mineral
processing.**





Ipsa Scientia Potestas Est
* Conquering Darkness By Science

About Us

DAMA Engineering Inc. (DAMA) was incorporated in June 2005 by a number of professionals with diverse experience to provide exploration and mine development services. DAMA, while utilizing national management and engineering wealth of experience accumulated in Turkey, is at the same time establishing alliances with internationally recognized companies and individuals to provide the highest and competitive value for the clients.

Team

DAMA Engineering collaborates with experienced geologists, metallurgists and mining engineers from Europe and America as well as expert QP and PE certified DAMA Engineers. Each of the DAMA senior staff has long history of experiences in engineering and management of project development.

Mission

DAMA has the approach to utilize local as well as blend of local and international expertise to satisfy the requirements of clients. This way while maintaining high quality services, DAMA reduces cost of the projects undertaken comparatively, thus providing best value for the money spent.

References



Company Profile

DAMA Engineering (DAMA) was incorporated in June 2005 by a number of professionals with diverse experience to provide exploration and mine development services. DAMA, while utilizing national management and engineering wealth of experience accumulated in Turkey, is at the same time establishing alliances with internationally recognized companies and individuals to provide the highest and competitive value for the clients. Each of the DAMA senior staff has long history of experiences in engineering and management of Project development.

DAMA has the following personnel on company pay-role;

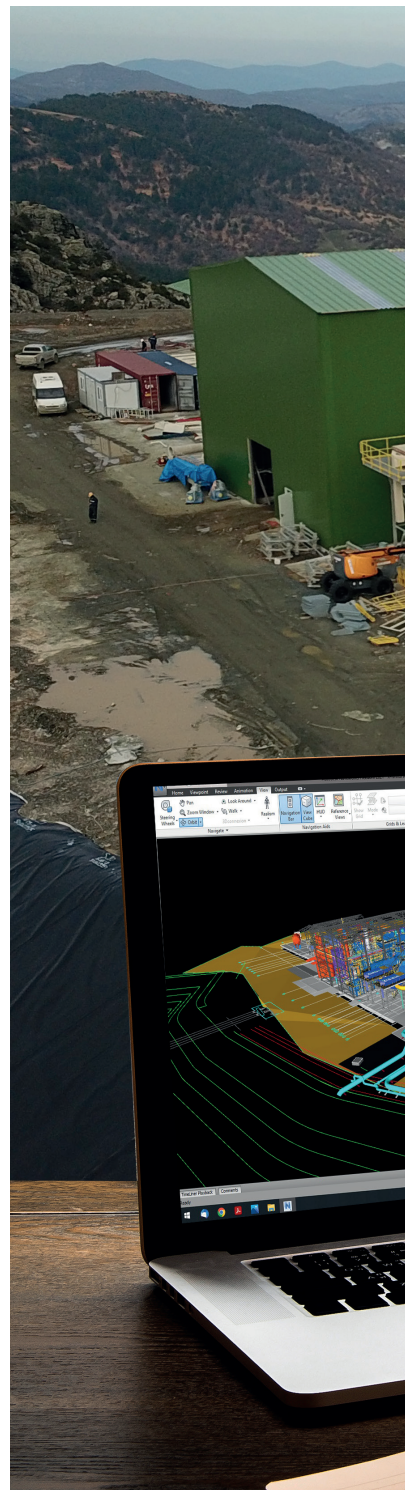
- * 6 Geologist (4 of them have QP status),
- * 6 Mining & Processing Engineer (3 of them has PE & QP status),
- * 2 Mechanical Engineer
- * 1 Industrial Engineer for procurement and costing, and
- * Administrative staff.

DAMA is in business partnership with local and international companies;

- * Kappes Cassiday & Associates, Reno, Nevada, USA (12 years of business partnership)
- * Bomenco (Previously Bolu) Processing Engineers, Vancouver, Canada (10 years of business association),
- * DAMA has large tested business relations through networking in all relevant areas.

DAMA offers wide range of services including but not limited to: Exploration planning and management,

JORC and NI 43-101 compliant resources estimation,
Order of magnitude, scoping, pre-feasibility and feasibility studies, Open pit and underground mine design and planning,
Pit optimization,
Mine development management.
Process Flowsheet design/optimization
Plant rehabilitation and optimization
EPC/EPCM work,
DAMA has the approach to utilize local as well as blend of local and international expertise to satisfy the requirements of clients.





Dama's Base & Precious Metals Projects Undertaken (Gold – Silver – Copper – Lead – Zinc)

DAMA has been mainly involved in exploration and development projects related to gold, silver, copper-lead zinc, chromite, iron and coal. Summary of some of the base & precious metals projects carried out by DAMA in the past are given in the following sections.

Index

1. Bolkardag Gold-Silver MC Project
2. Lapseki Gold Project
3. İvrindi Gold Project
4. İnlice Gold Project
5. Technical Report of Aksu Gold Project, Turkey
6. Technical Due Diligence Report on Alvalade Project, Portugal
7. Technical Due Diligence Report on Nasim Copper Mine, Bardaskan, Iran
8. Technical Due Diligence Report on Colt Resources Inc.'s Montemor and Borba Gold Project, Portugal
9. Initial Resource Estimation and Scoping Study of Gümüşler Deposit, Turkey
10. Taç & Çorak Copper – Lead – Zinc – Gold – Silver Project
11. Akarca Gold Property Scoping Study
12. Chowdar Gold Project, Azerbaijan
13. Alamos Gold Project, Turkey
14. Gümüşköy Silver Plant, Turkey
15. Belen Gold Copper Project, Turkey
16. Sisorta Gold Project, Turkey
17. Terek Antimony – Gold Project, Kyrgyzstan
18. Hazina Mağara Gold-Silver-Copper-Lead-Zinc Exploration & Resource Estimation Project

1. Bolkardağ

Gold-Silver MC Project

The project is located near Ulukisla Village of Nigde in Central Turkey. It is owned by JV company GUMUSTAS AS between Kurmel-Dogan Conglomerates.

DAMA as Consultant for the Development of the Project

The mine is located in the Bolkardag near Maden Koy. Mining in the area dates back to Hitites Period. Roman remnants were discovered in the underground caves. Limited mining activities were carried out, on and off, until 1908. MTA and later on a German company carried out some exploration works.

DAMA compiled the historical information on geology and mining and prepared an evaluation report. Following acquisition of the property by a mining company, KCA-DAMA Engineers were assigned the EPCM work For building a Merrill-Crowe tank leach operation For recovering high grade gold and silver in 2008.

Process Development Phase

DAMA/KCA conducted the test work For recovering gold and silver. A new process (hot - lime treatment process) was developed For silver recovery which was not recoverable due to being refractory.

Following successful test work, KCA/DAMA carried out a technical a study estimation investment and operating costs. The EPCM work started For 200 ton per day Merrill-Crowe project.

A 200 t/d capacity plant with units of crushing-grinding, hot lime pre-treatment, agitation CN-leaching, CCD, Merrill Crowe unit, gold room & tailings Facilities was successfully commissioned in 2009



Hot - Lime Treatment Tanks





The grinded ore (pulp) is heated up to about 85 °C and pre-treated before leaching to decompose the jarosite mineral. Thus, the gold and silver become liberated.

Hot lime application is rarely used in the world, and it is only used in Bolcardag processing plant in Turkey.

2. Lapseki Gold Project

Lapseki Gold project is located near village of Lapseki, Canakkale Province, Western Turkey. The project is owned by TUMAD Mining Company, a mining subsidiary of NUROL Holding, being one of the large diversified holding in Turkey.

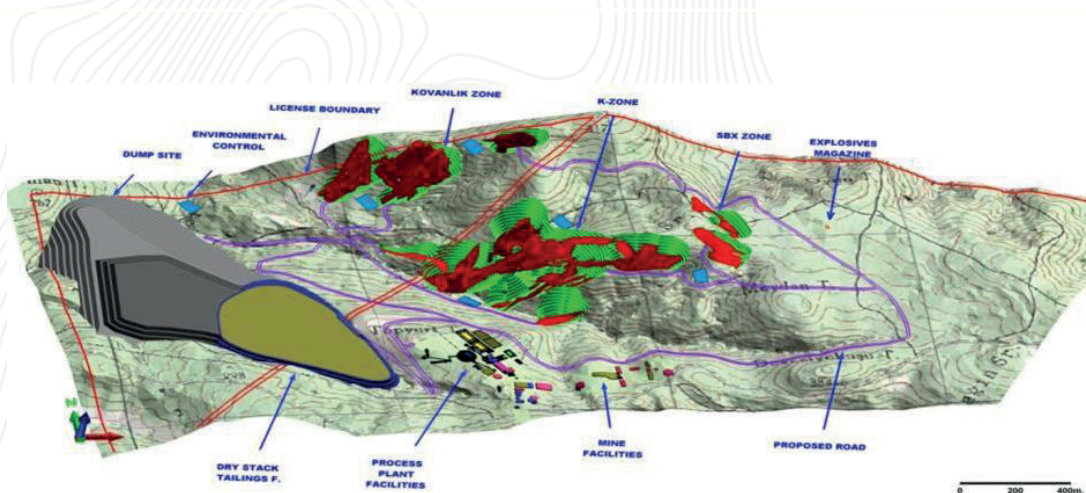
Mineral Resource Estimates

DAMA has completed number of preliminary resource estimations during the period of exploration, one valuation and one scoping study For the previous owner CHESSEY Resources, the previous owner of the deposit. After acquisition of the property by TUMAD, a JORC compliant resource estimation work was conducted based on the drill database of 261 reverse circulation (RC), 394 core drill holes and 92 channel lines.

DAMA reviewed and verified all the related data provided by the client, and created 3D geological and block models For the individual veins using the updated and verified database. Block values were estimated using Ordinary Kriging algorithms For the majority of the veins, with oriented search ellipses Following the strike and dip of the veins. Block model values were classified according to the JORC guidelines into Indicated and Inferred Resource categories.

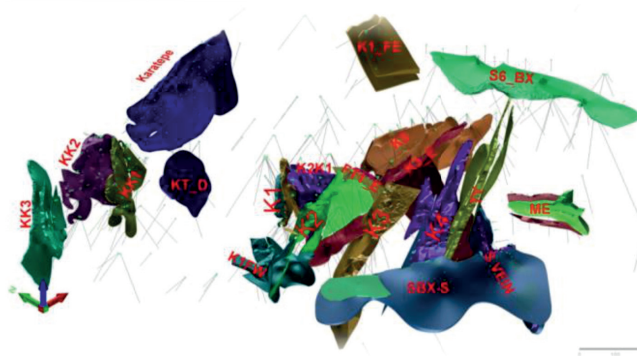
Kestanelik (Lapseki) Gold Project, Scoping Study

DAMA carried out an extensive scoping study comparing economics of 2,400 ton per day heap and tank leach projects on request From Australian Chesser Resources. The Scoping Study comprising pit optimization and mine planning, review of technological work conducted by others, process Flow sheets and mass balance development, equipment selection, OPEX and CAPEX estimation and economic assessment.



Feasibility Study Level Resource Estimation

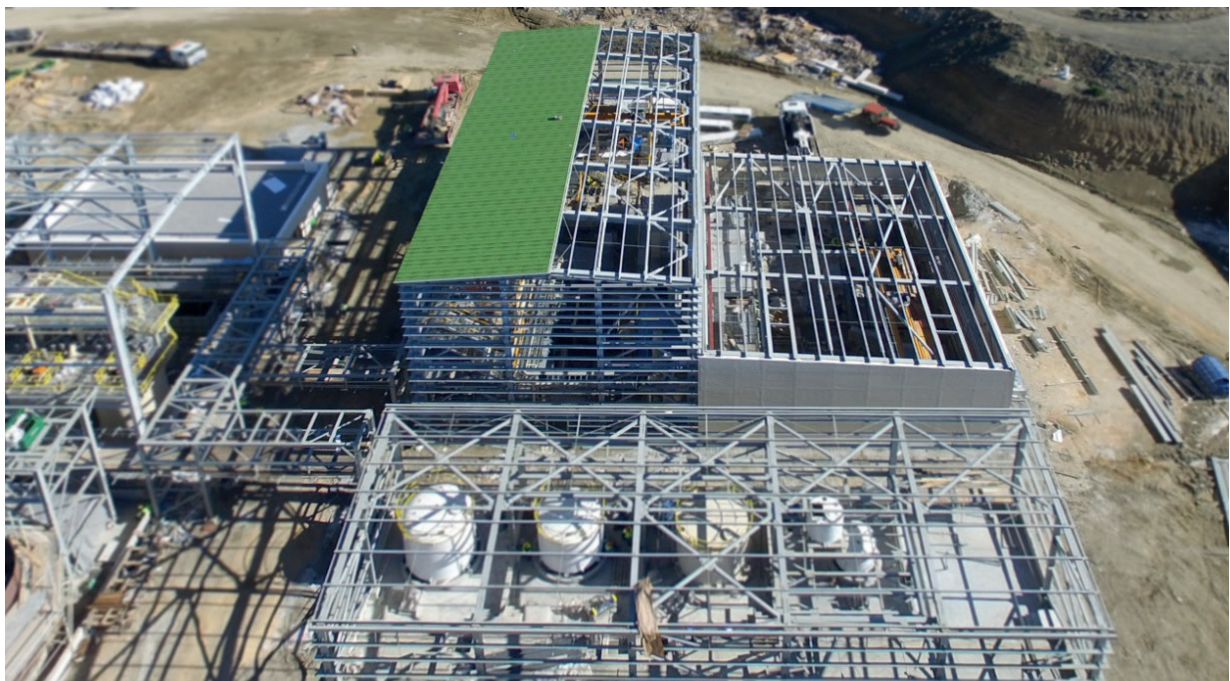
DAMA Engineering conducted the final NI-43-101 compliant resource report used as part of the Bankable Feasibility study For the project.



The FS study was submitted to the World Bank and EBRD for project financing. The financing was secured; the project was qualified as the successful project of the year and rewarded with a Certificate of Achievement.

2. Tonne Strip Circuit Design & Supply

DAMA Engineering in partnership with KCA, undertaken a turn-key design, supply and supervision of absorption, acid washing, carbon stripping, carbon regeneration, electro-winning, retort sytem and gas scrubbing circuit together with gold room. The plant was commissioned in the last days of 2017.



3. Ivrindi Gold Project

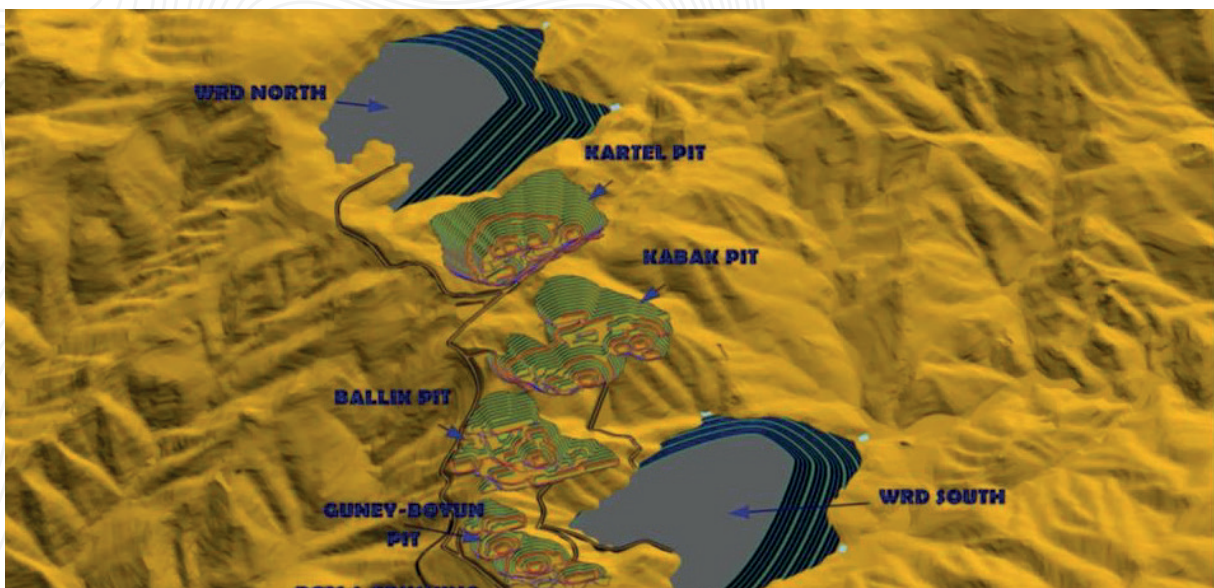
Ivrindi Gold Project is located near Ivrindi town of Balıkesir Province, Western Turkey. It is owned by TUMAD Mining Company, a mining subsidiary of NUROL Holding, one of the large diversified holding in Turkey. DAMA Engineering started to be involved with the project from the time when it was at gross-roots exploration stage. DAMA's involvement with the project continued from being exploration consultants, doing resource reviews, managing early test works, conducting scoping studies, managing sampling and amenability & variability test works, conducting Bankable Feasibility study in partnership with KCA. The FS won EBRD award of being the best prepared study of the year 2017. It is 7Mt per year HL project and DAMA/KCA is awarded Turn-Key agreement to build the 7t carbon ADR plant. The plan is commissioned on 2018.

The Karadere (Ivrindi) Gold Project Resource Estimation

DAMA conducted a NI43-101 compliant resource estimation report dated February 25, 2015. In this study all the related data provided by the client were reviewed and verified, a 3D geological modelling was constructed and an initial resource estimation for the property was estimated and additional exploration work including untested new targets were recommended.

Scoping Study of the Karadere

DAMA Engineering (DAMA) carried a Scoping Study on the Karadere (Ivrindi) Gold Project in late 2016. In this Scoping Study defining the development options for the Karadere (Ivrindi) Project including open pit mining, utilizing a three stage crushing circuit with tertiary HPGR crushing, agglomeration, conventional heap leaching and an adsorption, desorption recovery (ADR) plant for recovery of metals from pregnant heap leach solution were evaluated.



Feasibility Study of the Ivrindi Gold Project

DAMA Engineering in association with Kappes, Cassiday and Associates (KCA) were solicited by TUMAD Madencilik San. ve Ticaret A.Ş. to carry out a Feasibility Study on the Ivrindi Heap Leach Project.

This NI 43-101 compliant FS study includes exploration, metallurgical tests, updated mineral resource estimate, mine planning and scheduling, process design, cost estimates, investigations of site environmental status and regulatory requirements, analysis of infrastructure and logistic strategies, and financial analysis. DAMA conducted final resource estimation signed by DAMA QPs, Mine planning, infrastructure planning, crusher section, 750m long conveyor, infrastructure planning, project costing and financial evaluation.

The FS work was awarded the prize for being one of the two best projects in 2017 presented to EBRD for financing. While, the second FS was based on DAMA resource estimation prepared in compliance of NI 43-101 code, signed also by DAMA QPs.

7 Tonne Strip Circuit Design and Supply (ADR)

Following successful implementation of Lapseki ADR plant, Dama Engineering is awarded a turn-key, 7 ton carbon Adsorption-desorption -electro-winning (ADR) plant design, supply, construction and commissioning. The plant has CIC adsorption, acid washing, carbon stripping, and carbon regeneration, electro-winning, retort system and gas scrubbing and gold room units. The plant is commissioned on the 15th December 2018.







The Ivindi ADR plant consists of carbon adsorption (CIC), acid washing, carbon stripping and regeneration, electro-recovery, mercury recycling and smelting units with a 7 tons of Carbon adsorption and stripping capacity.

4. Inlice Gold Project

Inlice Gold project is located close to Inlice village half way between Konya and Seydisehir. It is a vein-type epithermal high sulphidation gold project. The current project treats oxide ore only.

Technical Studies

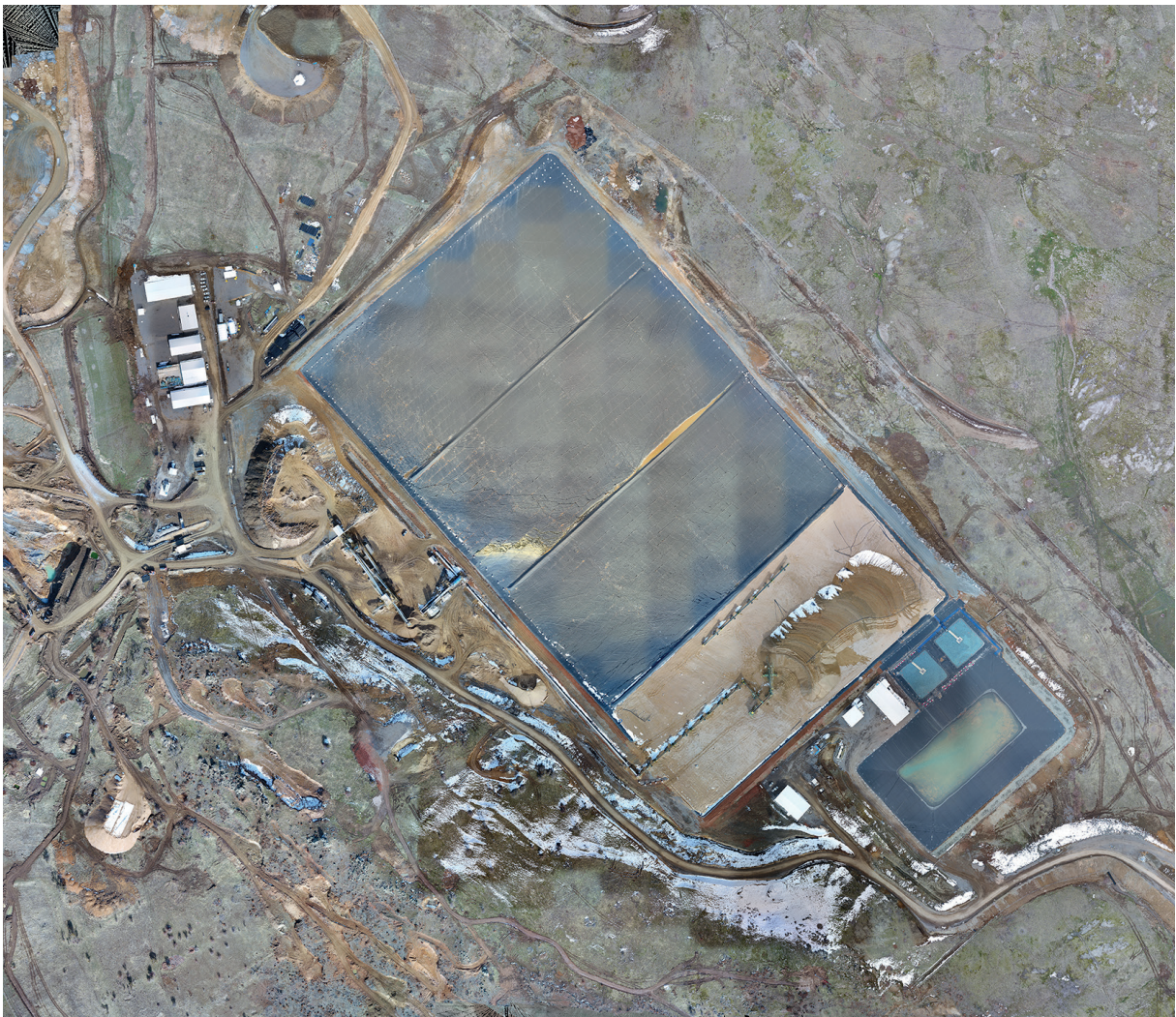
DAMA in association with KCA carried out a technical study for 1000 ton per day heap leach project for STRATEX (Australia) and NTF (Turkey) JV partnership. The project included resource estimation, mine planning (Open pit), technological test work (Heap Leach) and investment and operating cost estimations for 1000 ton per day. The study was completed by the end of April 2011. After the study work the project was sold to ESAN, the subsidiary

Heap Leach (HL) Project

In 2012 KCA/DAMA were awarded the EPCM contract to build the 1000t/d HL Facilities and deliver a 60 m³/h (Model 60) carbon adsorption-desorption-recovery plant (ADR plant) for processing leach solutions from the heap. The project was successfully commissioned in December 2017.



ESAN, Inlice Heap Leach pad and the plant, put in operation in December 2017



ESAN, Inlce Heap Leach pad and the plant, put in operation in December 2017





Inlice Gold Mine project has the first and only gold processing plant in Turkey where carbon stripping is performed by using methanol at atmospheric pressure.

Other Projects

5. Technical Report Of The Eymir Gold Project, Havran, Turkey

DAMA Engineering (DAMA) was commissioned by AKSU Madencilik ve Elektrik Üretim Ticaret A.Ş. (AKSU) to provide a Technical Study for the Eymir Gold Project Located near Havran, Balıkesir, Northwestern Turkey. DAMA carried out 11,000 tp heap leach design with 3 stage crushing. The DAMA's study includes review of geology and mineral resources estimation and addresses the issues mine design, processing, infrastructure requirement and environmental issues.

6. Technical Due Diligence Report On Alvalade Project, Southern Portugal

This report provides a thorough review of Alvalade VMS project in south-eastern Portugal in order to assist the investor's decision on acquiring or financing of the project. The work covers key technical aspects of the project and identifies areas of risk. As part of the technical due diligence, report and documents related to geology and exploration results were reviewed; the site visit was made to Alvalade property for data verifications.

DAMA carried out a site visit and thoroughly reviewed all available information, and concluded that there is a big chance for discovery of minable bodies in the defined drill targets and geologically favorable areas within the property. Further the Alvalade project is well located with respect to infrastructure, transportation and power supply. Therefore, the Project can be evaluated as an attractive early stage exploration opportunity. DAMA recommends that COLT "goes ahead" in making the deal if the terms of the agreement are reasonable and viable.

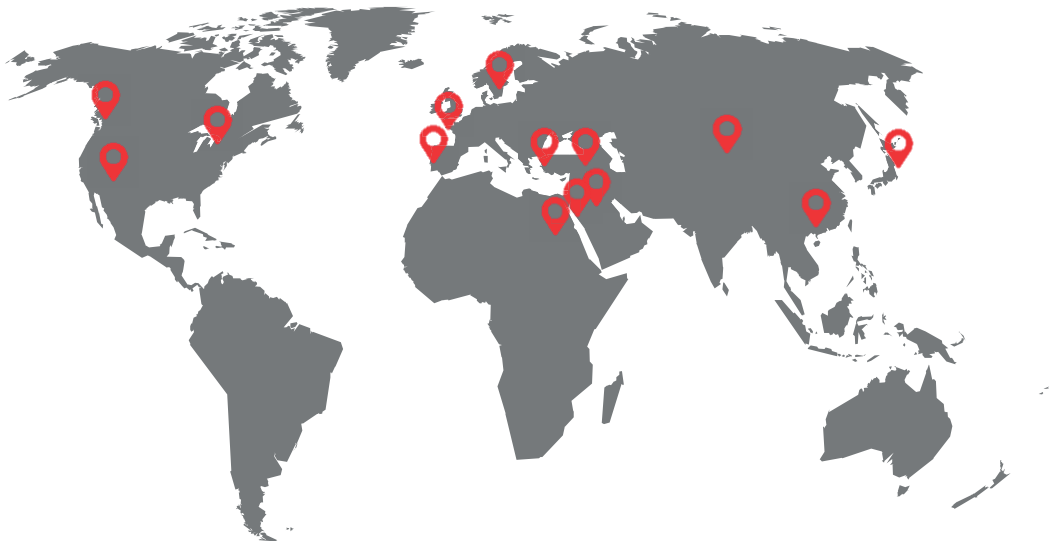
7. Technical Due Diligence Report On Nasim Copper Mine, Bardaskan, Iran

DAMA carried out a site visit and critically reviewed all available information on the Koomeh Madan Pars Company's Nasim Copper Mine in south-eastern Iran in order to assist the investor's decision on acquiring of the project.

The work covers all key technical aspects of the project and identifies areas of risk. As part of the technical due diligence, report and documents related to geology, exploration results and mineral resources were reviewed; the site visit was made to the mine site and plant for data verifications. At the end DAMA concluded that the Nasim property has an exploration potential much more than the mineral resources delineated to date, and the production capacity of both mine and plant could be increased and the mine and beneficiation operations could be optimised.

DAMA's service quality is at international standards and its reports are accepted by **international stock exchanges and banks.**

Among the more than **300 customers** that DAMA has served so far, there are leading domestic and foreign mining companies, financial institutions and banks.



Other Projects

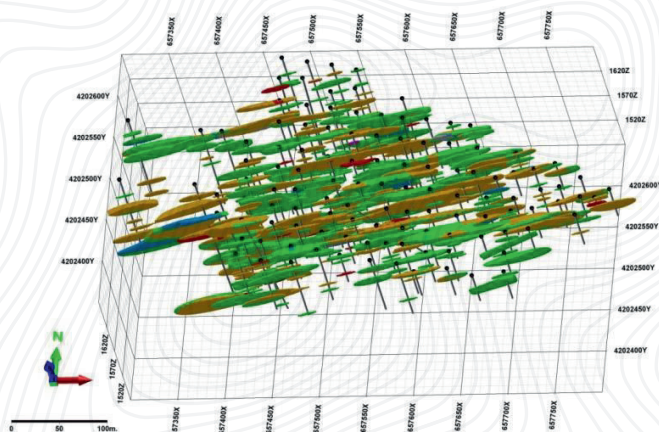
8. Technical Due Diligence Report On Colt Resource Inc's Montemor And Borba Gold Project, Alentejo Region, Southern Portugal

This report provides a critical review of COLT Resources Inc's ('COLT's') Boe Fe/Montemor gold and Borba copper-gold (i.e. Miguel Vacas copper deposit) projects in south-eastern Portugal in order to assist the investor's decision on acquiring or financing of the project.

The work covers key technical and legal aspects of the project and identifies areas of risk. As part of the technical due diligence, report and documents related to geology, exploration results and mineral resources were reviewed; the site visit was made to Boe Fe and Borba properties for data verifications.



DAMA sees no serious technical impediments to mine Casas Novas and Chamine' deposits. However, it is almost clear that, any decision related to social and environmental issues to be taken by the court is expected to influence future mining activities in the Boa Fe' and Montemor licenses.



9. Initial Resource Estimation And Scoping Study Of The Gümüşler Despoit, Niğde, Turkey

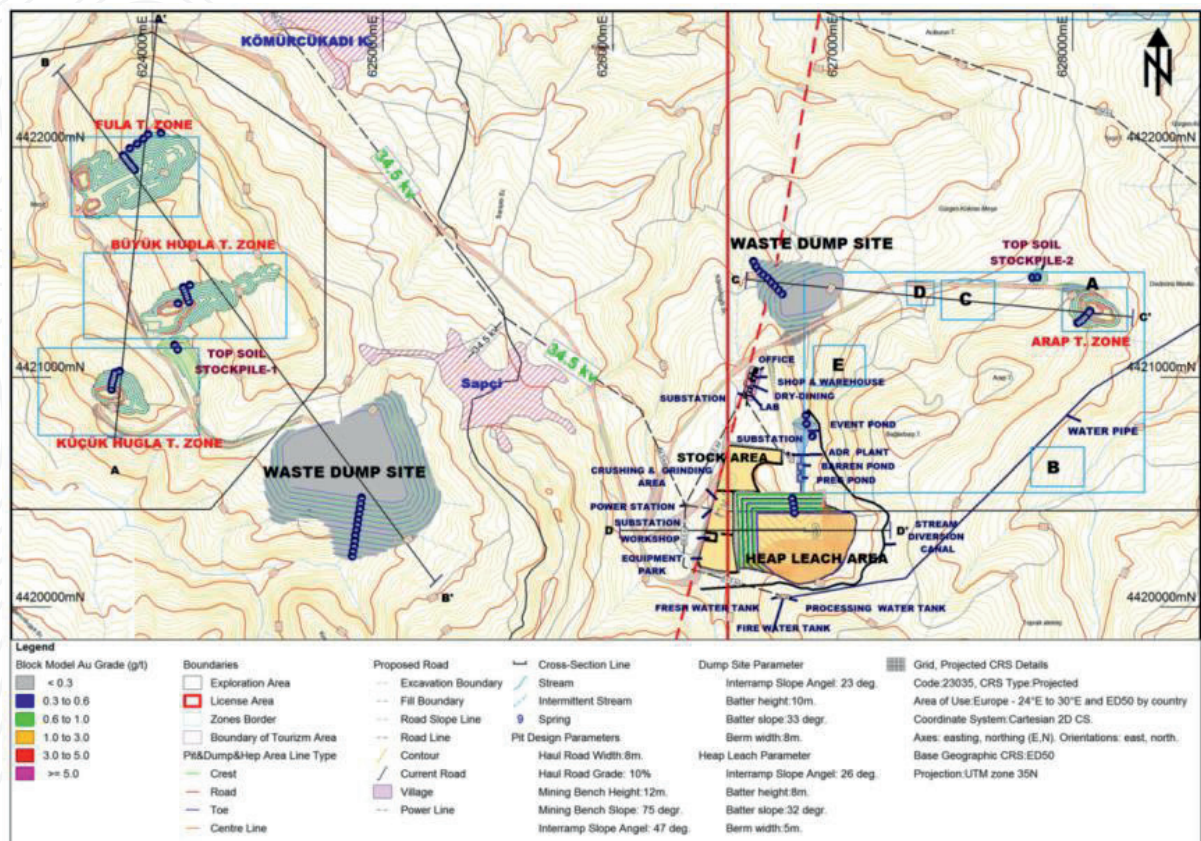
DAMA completed a non-compliant resource estimation work based on the exploration works performed by the client to the end of the 2014. DAMA reviewed and verified all the related data provided by the client, and conducted a 3D geological modelling and maiden resource estimation for the property. DAMA also recommended some works aiming data quality improvements which are considered to be necessary to prepare a NI43-101 compliant resource estimation as well as additional exploration work for the property including new targets which untested before.



Other Projects

11. Akarca Gold Property Scoping Study

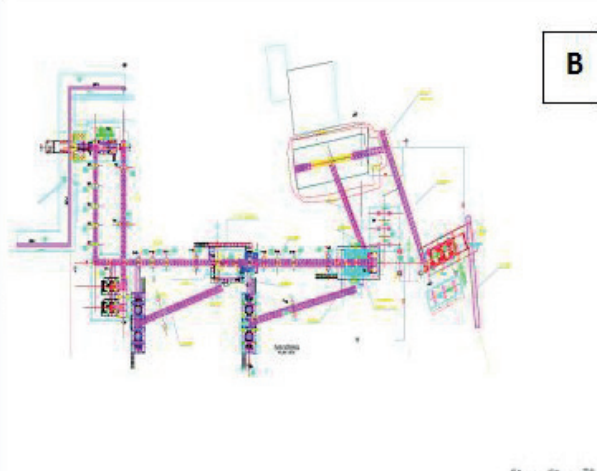
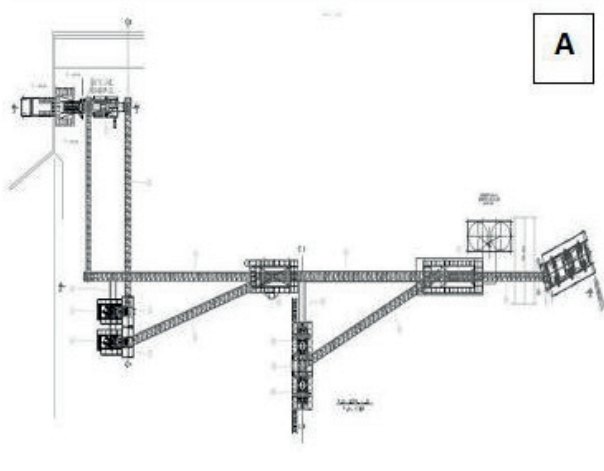
Scoping study on Akarca Gold deposit: DAMA completed a scoping study consisting of pit optimization, open pit design and mine planning, infrastructure design and social and economic evaluation.



12. Chowdar Gold Project Ganja, Azerbaijan

DAMA carried a capacity increase project increasing 4 stage crushing capacity form 1500 to 3000 tpd and optimization study for Aimroc (Aze an International Resources) Company's Chowdar heap leach mine.

DAMA took the Engineering and construction management responsibility for the project and increased the capacity to the required level. The crushing plant crushes 3000 ton per day ROM from 0.75 meter to 6 mm size



Other Projects

13. Alamos Gold Project, Çanakkale, Turkey

KCA-DAMA carried out pre-feasibility study. Study was completed in July for 15,000 ton per day and 30,000 ton per day heap leach project. Study was completed in July 2012.

The Kirazli and Agi Dagi Gold and Silver Mine development projects (the "Projects") are located in the Biga Peninsula in the province of Çanakkale, in north-western Turkey. The Projects are owned by Alamos Gold Inc. ("Alamos") through its wholly-owned Turkish subsidiaries Kuzey Biga Madencilik San. Tic. A.S. ("Kuzey Biga") and Dogu Biga Madencilik San.Tic. A.S. ("Dogu Biga").

This Pre-Feasibility Study ("PFS") presents the updated mineral resource and cost estimates for the Projects including the mining sequences, pit configurations, production rates, and other considerations relevant to optimizing the financial performance of the projects.

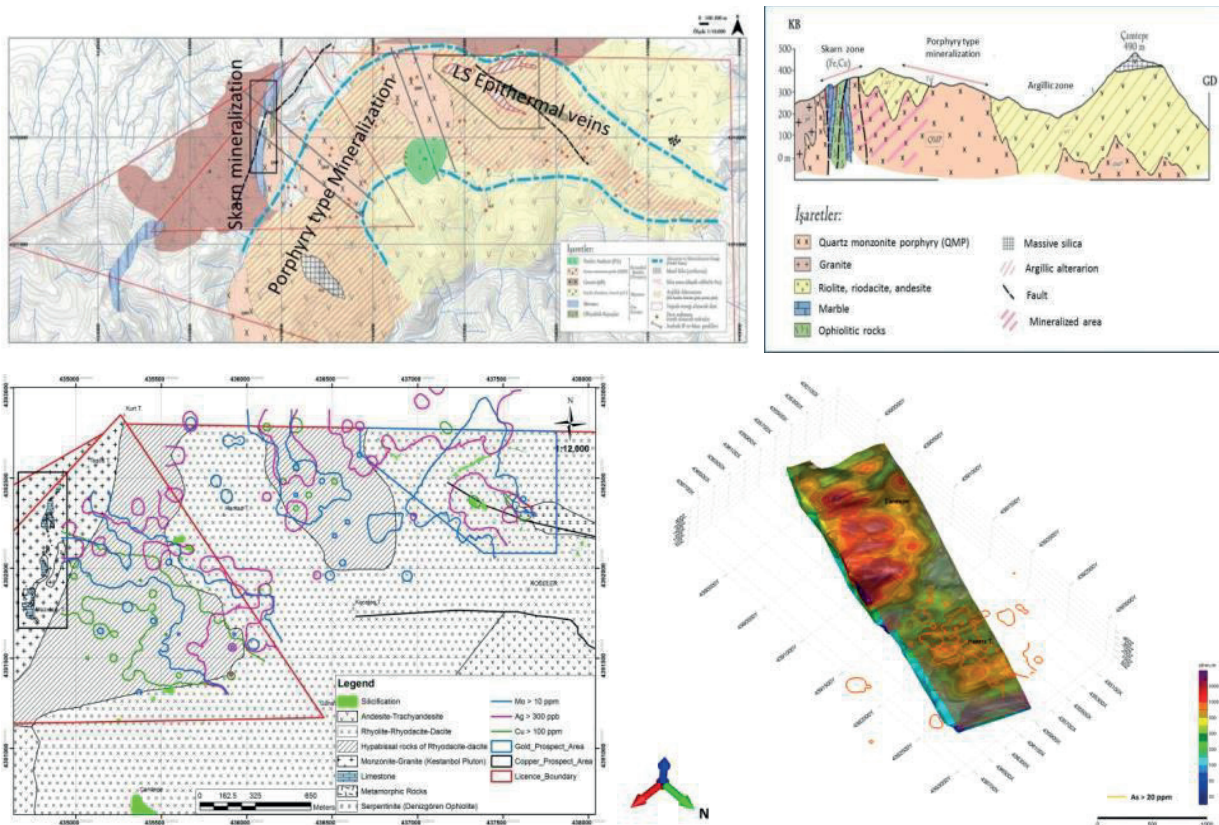
14. Gümüşköy Silver Plant, Kütahya, Turkey

DAMA carried out technical review study for capacity increment and corresponding investment for CREDIT SUISSE LLC on Yıldızlar SSS Holding silver plant in Kütahya.



15. Belen (Ezine) Gold And Copper Project Çanakkale NW Turkey.

Belen exploration Project on TECK Madencilik property located in Ezine, Çanakkale is an on-going project since early 2010. The Project includes stream sediment/soil/rock geochemical surveys, geological mapping at a scale of 1/1000 and IP surveys. The two separate large drill targets for gold and porphyry



16. Sisorta (Koyulhisar, Sivas) Gold Praoject

The project is located at Koyulhisar, Sivas. Gold mineralization is a high sulphidation type, located in the silicified freatic breccias related to faults of a caldera system. DAMA carried out resource estimation studies using existing drilling results and prepared a comprehensive report containing exploration, mining, milling, infrastructure studies and economic evaluations for the deposit. DAMA also carried out a due-diligence study on the same property in April 2013.

Other Projects

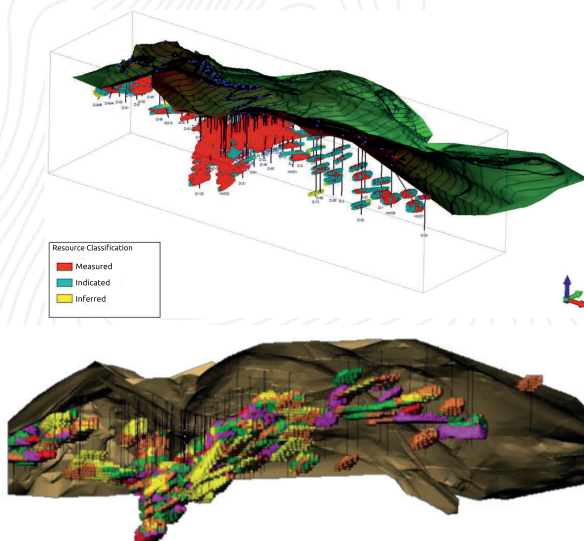
17. Terek Antimony - Gold Project, Jalala Bad, Sw Kyrgyzstan

DAMA conducted a "due diligence" work on the Terek antimony-gold deposit in Kyrgyzstan For a Turkish Mining company in 2009. The project mainly involves data compiling, data verification, surface sampling and a new resource and reserve estimation study in accordance with JORC standards.

18. Hazine Mağara(Gümüşhane, Northeastern Turkey) Gold - Silver - Copper - Lead Zinc Exploration & Resource Estimation Project

Hazine Mağara Au, Ag, Cu-Zn-Pb mineralization, located in Gumushane and owned by Saray Hali AS, has been mined from early 18th century l 1930s. In the modern times State Exploration Company (MTA) and Cominco Ltd of Canada has done limited amount of mapping, geochemical and geophysics works and some scout drilling. In 2005 DAMA was assigned to the project as the Project Manager to evaluate existing data, plan and conduct exploration mainly for gold and silver and delineate a resource in compliance with JORC standards. In all, DAMA carried out 20 line km of IP geophysics and 16000 m drillings from 114 locations in 3 years. DAMA area of responsibilities was as follows;

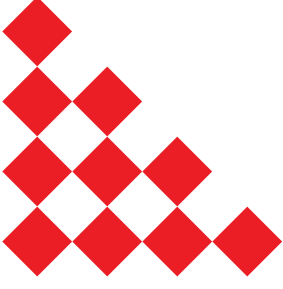
- * Design and plan exploration,
- * Prepare budgets,
- * Evaluate continuously the drilling results,
- * Revise geology,
- * Mineral resource estimate,
- * Open pit design,
- * Supervise the technological work for process development, and
- * Propose the Process Flow sheet.
- * The mine is in development phase; the client is constructing a 599t/d floatation mill.



Three dimensional block model of the Hazine Magara Au-Ag-Cu-Zn deposit

Notes

DAMA



dama-engineering.com

Address: Ankaralılar Caddesi 2562 Sokak 1/14A Azat Bey Sitesi Çankaya, Ankara

Phone: +90 312 236 45 80